

KEYNOTE LEGEND	
FLOOR PLAN CODED NOTES	
03-1	EXTERIOR PRE CAST CONCRETE WALL PANEL SHALL BE INSULATED WITH PAINTED FINISH - COLOR 'A'
03-2	EXTERIOR PRE CAST CONCRETE WALL PANEL SHALL BE INSULATED WITH PAINTED FINISH - COLOR 'B'
03-3	EXTERIOR PRE CAST CONCRETE WALL PANEL SHALL BE INSULATED WITH PAINTED FINISH - COLOR 'C'
03-7	EXTERIOR PRE CAST CONCRETE WALL PANEL SHALL BE INSULATED WITH PAINTED FINISH - SW 7514 FOOTHILLS.
03-8	1/2" DEEP REVEALS
03-10	UNINSULATED PRECAST WALL PANEL TRASH ENCLOSURE.
03-11	CONCRETE RETAINING WALL (SEE CIVIL DRAWINGS)
03-12	PRECAST PIERS WITH PAINTED FINISH - COLOR 'C'
05-2	PAINTED STEEL TUBE SUNSHADE - SEE STRUCTURAL & REFERENCED ARCHITECTURAL SECTIONS
05-10	GALVANIZED OPEN STEEL GRATE STAIRS FROM BUILDING TO DOCK APRON LEVEL. SEE SECTIONS FOR DETAILS - COORDINATE NUMBER OF RISERS WITH APRON SLOPE TO MAINTAIN CODE COMPLIANCE.
07-8	PRE FINISHED METAL 24 GA. COPING COLOR SHALL BE 'CLEAR ANODIZED FINISH'.
07-11	CANOPY WITH PRE-FINISHED METAL FASCIA.
08-1	ALUMINUM STOREFRONT
08-4	PAINTED HOLLOW METAL SERVICE DOOR AND FRAME WITH EMERGENCY EGRESS CODE REQUIRED LIGHTING (COLOR TO MATCH ADJACENT PRE CAST COLOR)
08-5	INSULATED OH DOOR, FACTORY FINISHED. 6" DIAMETER X 4'-0" TALL CONCRETE FILLED STEEL PIPE BOLLARD(S), PAINTED SAFETY YELLOW
08-6	INSULATED OH DOOR FACTORY FINISHED WITH DOCK SEALS, DOCK LEVELERS AND BUMPERS.
26-1	EXTERIOR LIGHT FIXTURE

EXTERIOR SYSTEMS

ROOF ASSEMBLY: BALLASTED ROOF MEMBRANE ON 5.75" DIRECT TO DECK APPROVED EPS INSULATION (R25 - TWO LAYERS, STAGGERED) ON METAL DECK (SEE STRUCTURAL DRAWINGS)

INSULATED PRECAST WALL PANEL SYSTEM: 10" INSULATED PRECAST CONCRETE WALL PANEL (R-14)

EXTERIOR WALL PAINT COLORS:

A - SW 7015 REPOSE GRAY
B - SW 7046 ANONYMOUS
C - SW 7045 INTELLECTUAL GRAY

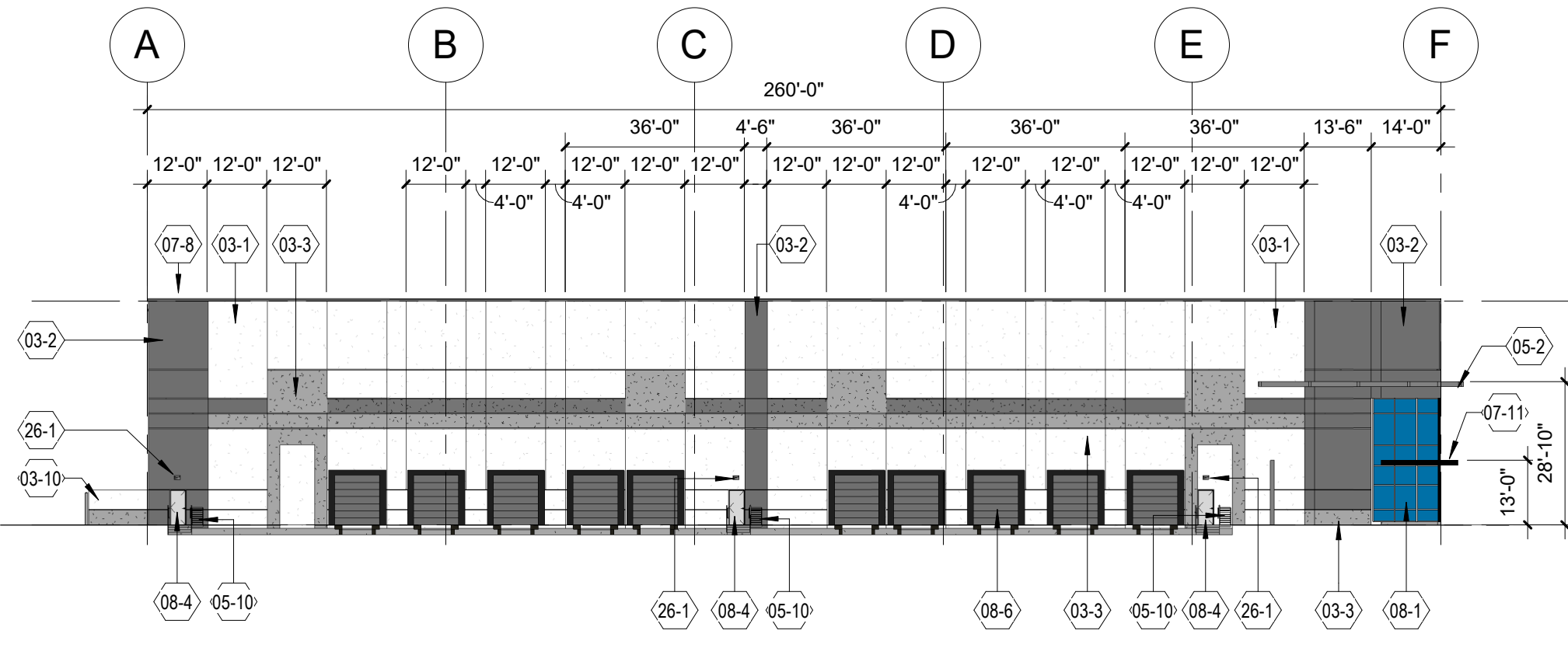
NOTES:

NO GROUND MOUNTED MECHANICALS ARE PLANNED FOR RTU TO SERVE OFFICE AREA.

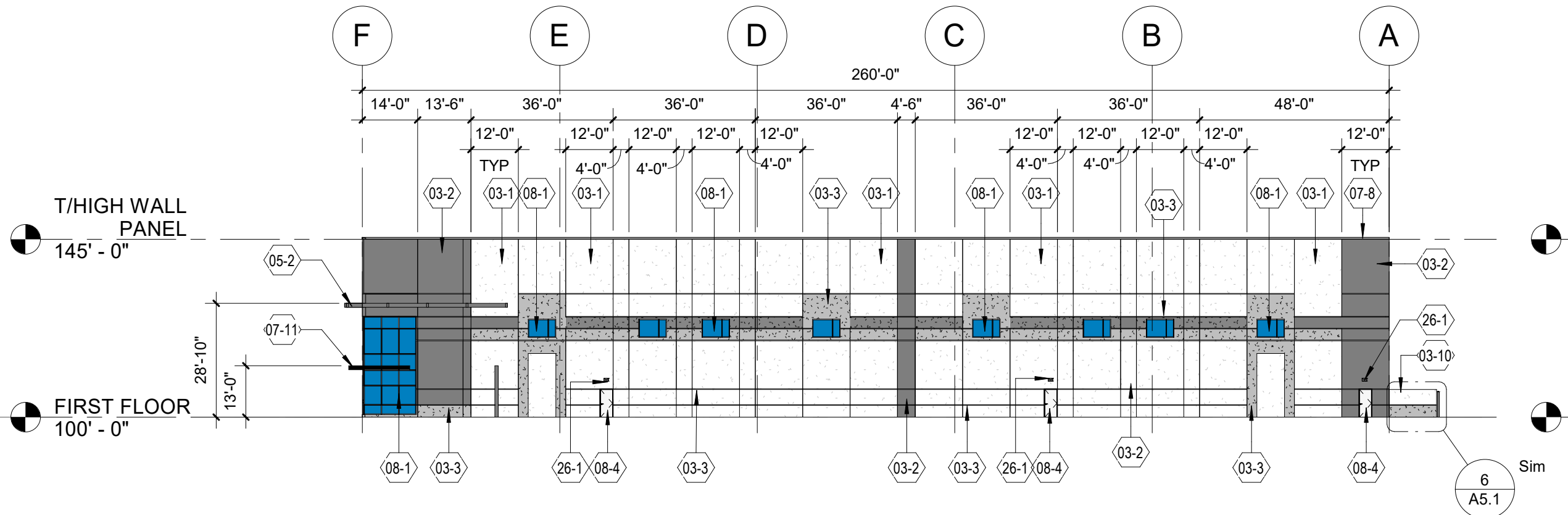
MECHANICALS SHALL BE SCREENED BY EXTENDED PRECAST PARAPETS.

NOTES:

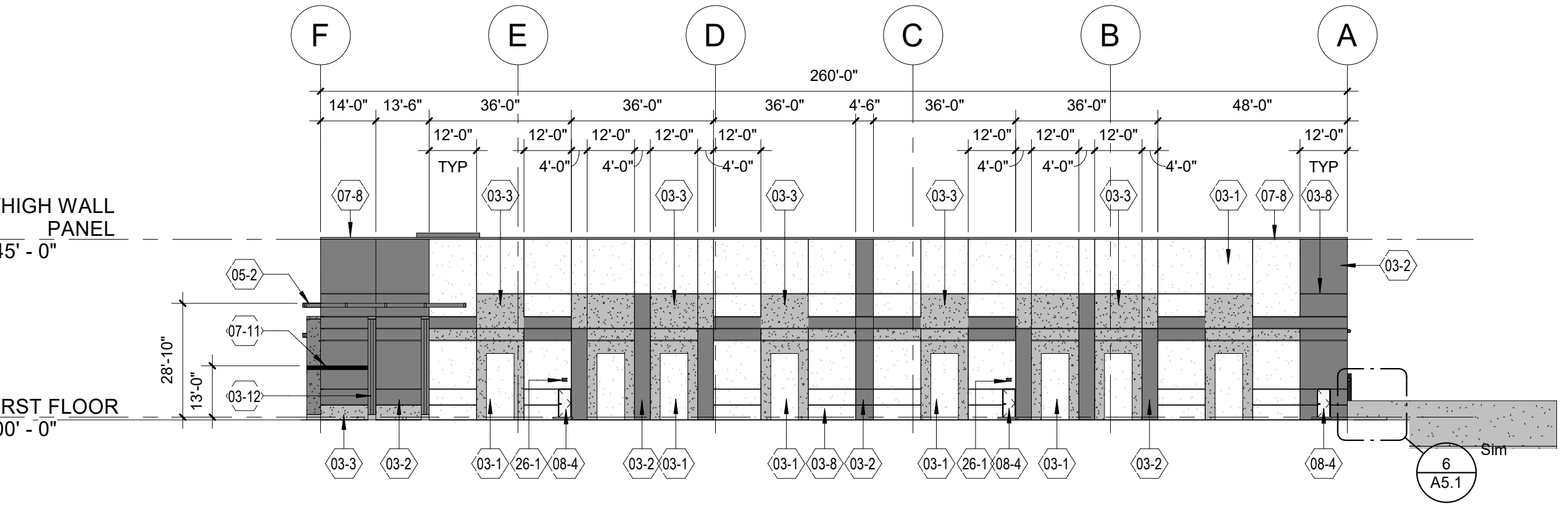
TRANSFORMER LOCATION IS NOT DONE AT THIS TIME, BUT ADDITIONAL LANDSCAPING SHALL BE INSTALLED TO SCREEN WHEN LOCATION IS DETERMINED.



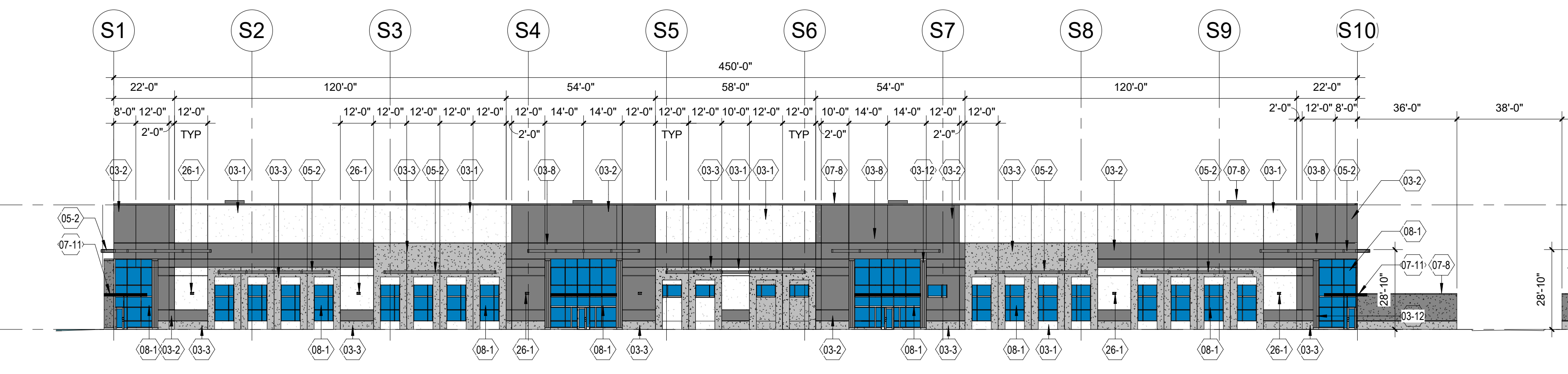
8 SOUTH EXTERIOR ELEVATION (BLDG 'A')
1" = 30'-0"



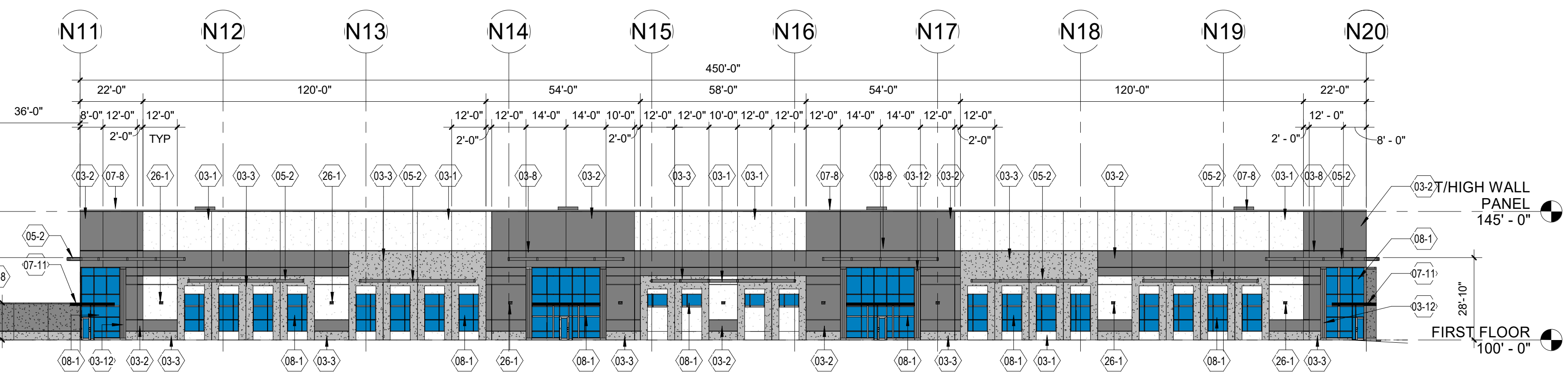
7 NORTH EXTERIOR ELEVATION (BLDG 'B')
1" = 30'-0"



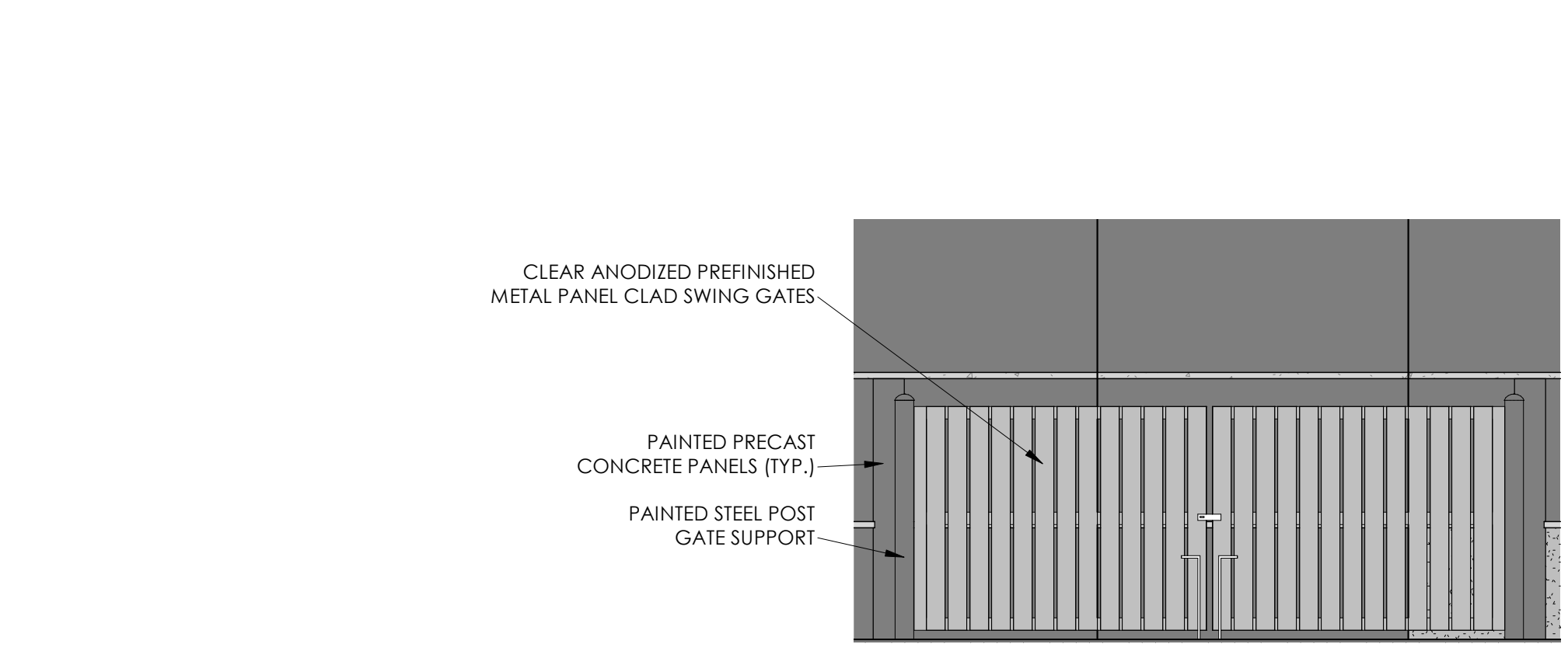
4 NORTH EXTERIOR ELEVATION (BLDG 'A')
1" = 30'-0"



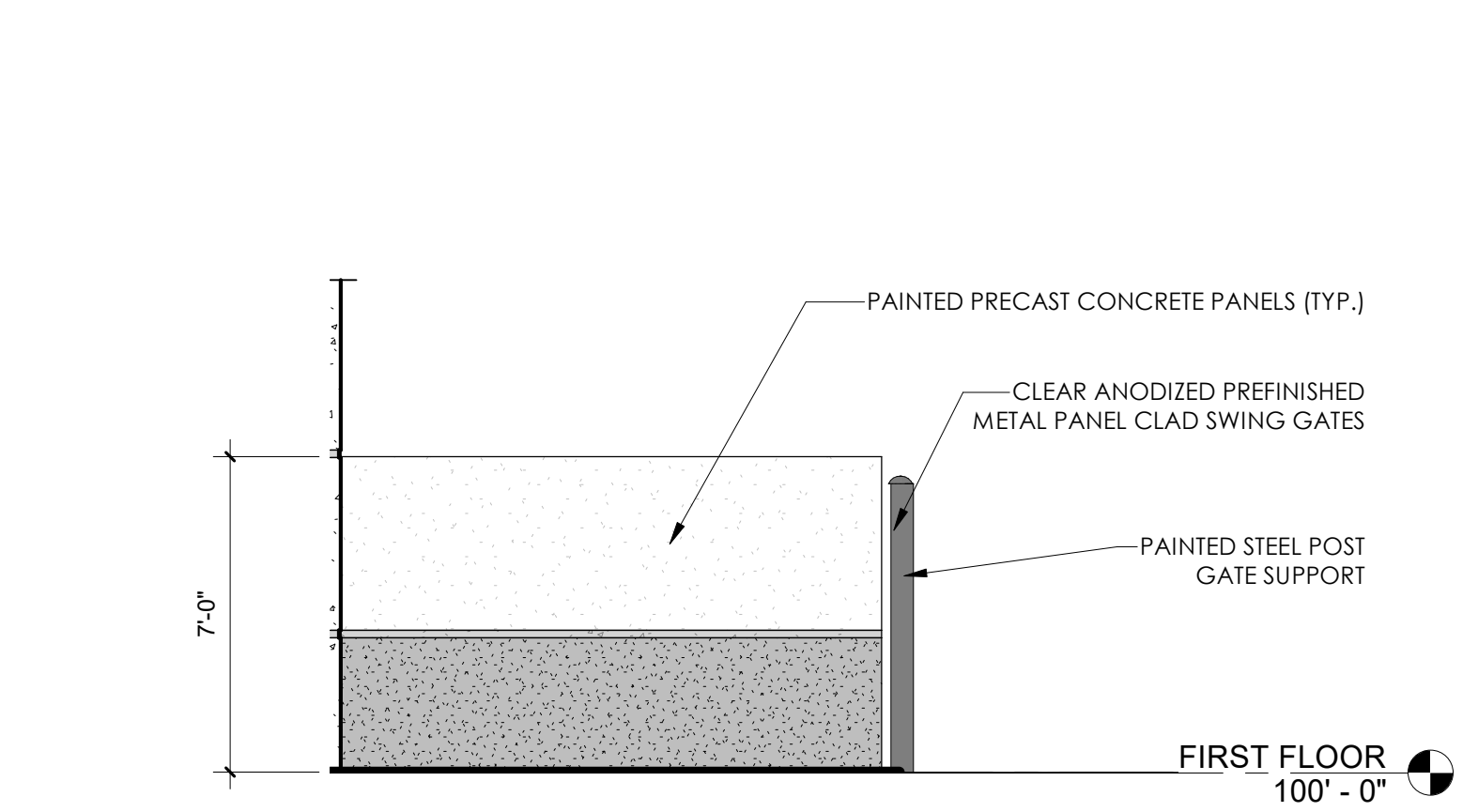
3 EAST OVERALL EXTERIOR ELEVATION
1" = 30'-0"



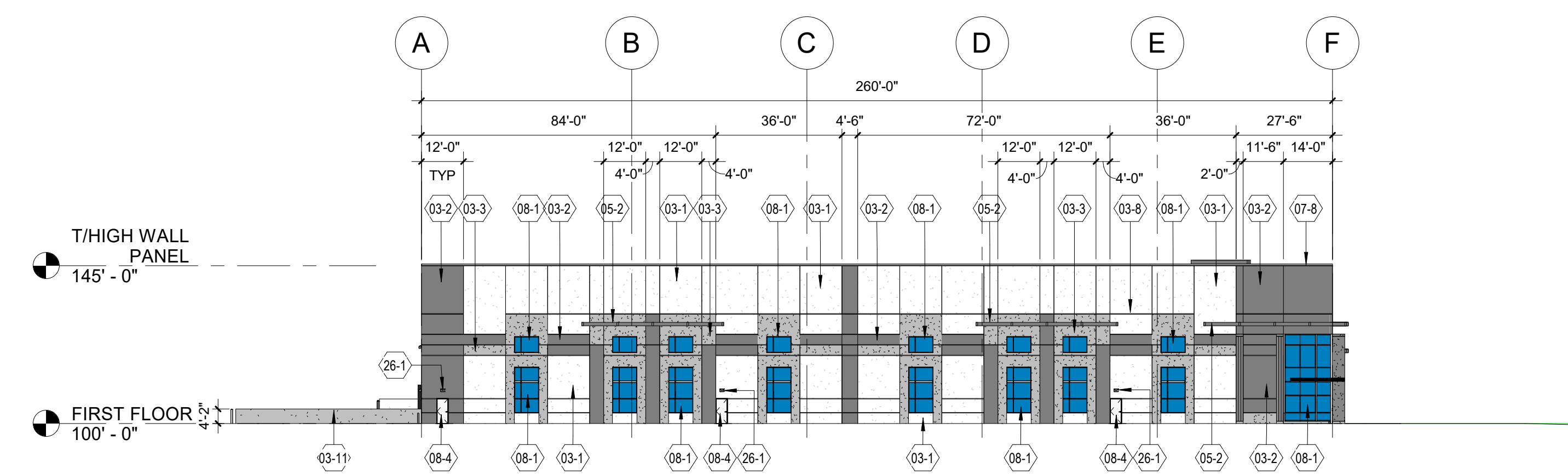
1 WEST OVERALL EXTERIOR ELEVATION
1" = 30'-0"



5 DUMPSTER GATE FRONT ELEVATION
1/4" = 1'-0"



6 DUMPSTER ENCLOSURE SIDE ELEVATION
1/4" = 1'-0"



2 SOUTH EXTERIOR ELEVATION (BLDG 'B')
1" = 30'-0"