

PLAN NOTES:

1. ALTHOUGH EVERY EFFORT HAS BEEN MADE IN PREPARING THESE PLANS AND CHECKING THEM FOR ACCURACY, THE CONTRACTORS MUST REVIEW ALL DETAILS OF THEIR TRADES AND BE RESPONSIBLE FOR THE SAME.
2. DO NOT SCALE DIMENSIONS FROM DRAWINGS. CONSULT GENERAL CONTRACTOR OR THE ARCHITECT WITH ANY QUESTIONS.
3. PLACEMENT OF BUILDING COMPONENTS, MECHANICAL EQUIP. APPLIANCES AND ELECTRICAL COMPONENTS IS SUBJECT TO FIELD ADJUSTMENT. ACTUAL CONSTRUCTION MAY NOT CONFORM EXACTLY TO THE LOCATIONS INDICATED ON THESE DRAWINGS.

GENERAL NOTES:

1. THE DESIGNER MAINTAINS NO RESPONSIBILITY FOR THE GENERAL CONTRACTOR, SUBCONTRACTORS, OR THOSE WORKING IN SUCH CAPACITIES, FOR THE METHODS USED, OR LACK THEREOF, IN THE EXECUTION OF THE WORK AND SAFETY PROCEDURES AND PRECAUTIONS TAKEN AT THE PROJECT SITE.
2. CONTRACTORS SHALL ASSUME FULL RESPONSIBILITY - UNRELIEVED BY REVIEW OF SHOP DRAWINGS NOR BY SUPERVISION OR PERIODIC OBSERVATION OF CONSTRUCTION FOR COMPLIANCE WITH THE CONTRACT DOCUMENTS - FOR DIMENSIONS TO BE CONFIRMED AND CORRELATED ON THE JOB SITE AND BETWEEN INDIVIDUAL DRAWINGS OR SETS OF DRAWINGS FOR FABRICATION PROCESSES AND CONSTRUCTION TECHNIQUES (INCLUDING EXCAVATION, SHORING AND SCAFFOLDING, BRACING, ERECTION, FORM WORK, ETC.), FOR COORDINATION OF THE VARIOUS TRADES, FOR SAFE CONDITIONS ON THE JOB SITE, AND FOR THE PROTECTION OF THE PEOPLE AND PROPERTY AT THE JOB SITE.
3. THE INFORMATION CONTAINED ON THE DRAWINGS IS IN ITSELF INCOMPLETE, AND VOID UNLESS USED IN CONJUNCTION WITH ALL THE SPECIFICATIONS, TRADE PRACTICES, OR APPLICABLE STANDARDS, CODES, ETC., INCORPORATED THEREIN BY REFERENCE, OF WHICH THE CONTRACTOR CERTIFIES KNOWLEDGE BY SIGNING THE CONTRACT.
4. UNLESS NOTED OTHERWISE, ALL DETAILS, SECTIONS, AND NOTES ON THE DRAWINGS ARE INTENDED TO BE TYPICAL FOR SIMILAR SITUATIONS ELSEWHERE.
5. UNLESS OTHERWISE SHOWN OR NOTED, THE GENERAL CONTRACTOR SHALL BE RESPONSIBLE FOR COORDINATING THE LOCATION AND THE PLACEMENT OF ANY INSERTS, HANGARS, PIPE SLEEVES, HOLES OR ANCHOR BOLTS THAT ARE REQUIRED BY THE MECHANICAL OR ELECTRICAL EQUIPMENT.
6. THE CONTRACTOR SHALL COMPLY WITH THE LATEST OCCUPATIONAL SAFETY HEALTH ACT REQUIREMENTS.
7. ALL STATE OF WISCONSIN, LOCAL AND O.S.H.A. SAFETY CODES SHALL BE A PART OF THESE PLANS, AND IT SHALL BE THE RESPONSIBILITY OF THE GENERAL CONTRACTOR TO SEE THAT ALL PARTIES THAT WORK AT OR VISIT THE JOB SITE COMPLY WITH SAME.



FRONT (WEST) ELEVATION

1/4" = 1'-0"

SHEET INDEX

T-1	FRONT ELEVATION & SHEET INDEX
C-1	EXISTING SITE PLAN
C-2	PROPOSED SITE PLAN W/ UTILITIES & LIGHTING
C-3	SITE PHOTOMETRICS
L-1	LANDSCAPE PLAN
A-1	EXTERIOR ELEVATIONS
A-2	FIRST FLOOR PLAN
A-3	SECOND FLOOR PLAN
A-4	THIRD FLOOR PLAN
A-5	EXTERIOR ELEVATIONS

MOORLAND ROAD SALON

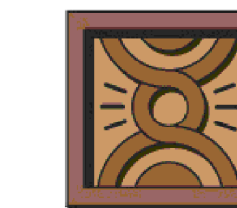
MOORLAND ROAD
NEW BERLIN, WI 53151

SHEET TITLE:

PROPOSED RENDERINGS, INDEX SHEET & GENERAL NOTES

REVISIONS:

- 5/24/18: PRELIM #1
- 8/15/18: PRELIM #2
- 9/6/18: PRELIM #3
- 10/3/18: PRELIM #4
- 10-11-18 revisions
- 10-31-18 revisions
- 11-16-18 revisions



PATERA LLC

Excellence in Architecture

2601 S. Sunny Slope Rd. • New Berlin, WI 53151

Phone: 262-786-6776 Fax: 262-786-7036

T-1

DATE: APRIL 11, 2018

PROJECT NUMBER: 18-111



REAR (EAST) ELEVATION

1/4" = 1'-0"



SIDE (NORTH) ELEVATION

1/4" = 1'-0"

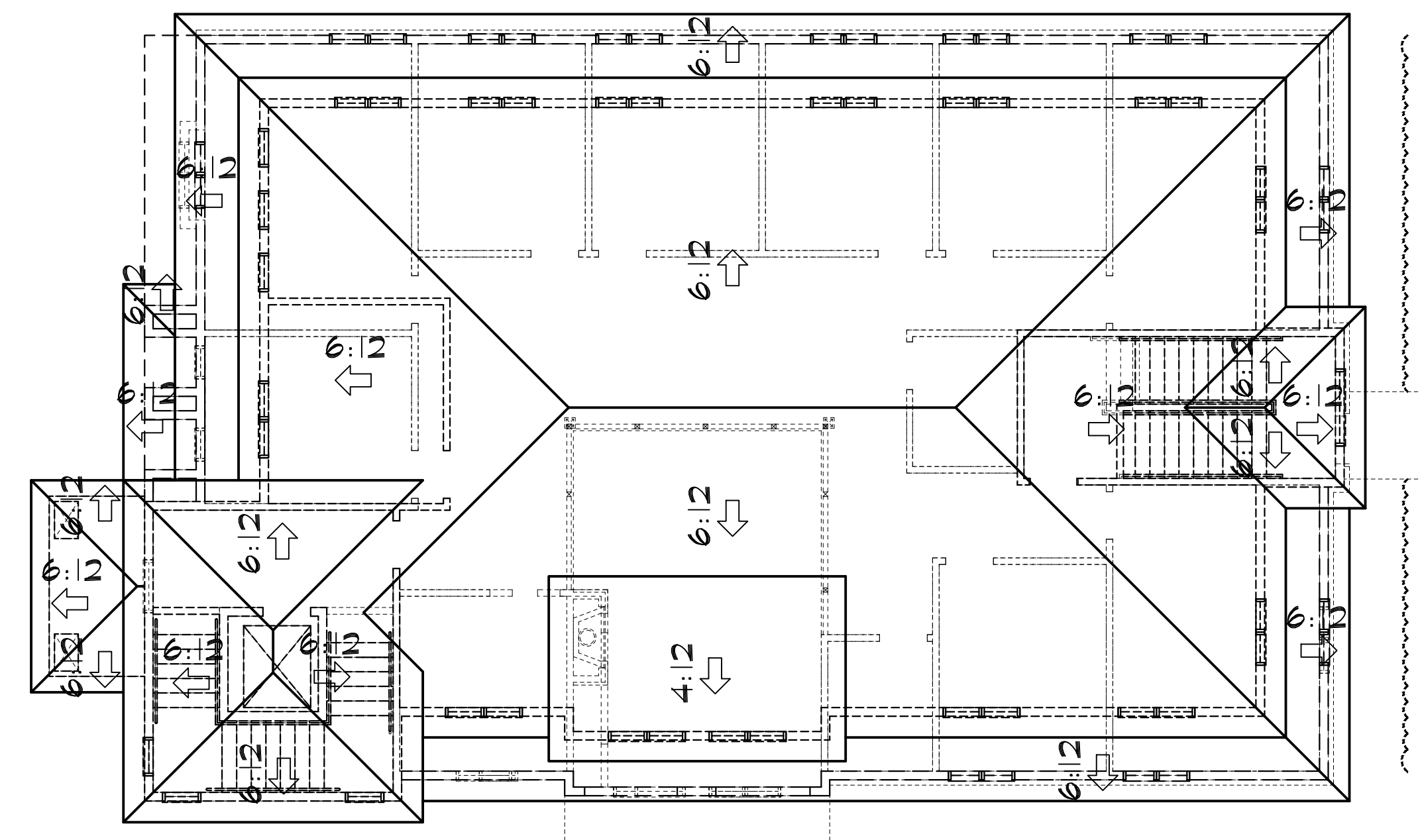
- REVISIONS:
- 5/24/18: PRELIM #1
 - 8/15/18: PRELIM #2
 - 9/6/18: PRELIM #3
 - 10/3/18: PRELIM #4
 - 10-11-18 revisions
 - 10-31-18 revisions
 - 11-16-18 revisions

A-1

COPYRIGHT: PATERA LLC...IT IS UNLAWFUL FOR ANYONE TO USE OR REPRODUCE BY ANY MEANS ALL OR ANY PORTION OF THESE CONSTRUCTION DOCUMENTS WITHOUT THE EXPRESSED WRITTEN PERMISSION OF PATERA LLC

REVISIONS:

5/24/18:	PRELIM #1
8/15/18:	PRELIM #2
9/6/18:	PRELIM #3
10/3/18:	PRELIM #4
10-11-18:	revisions
10-31-18:	revisions
11-16-18:	revisions



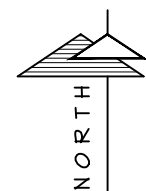
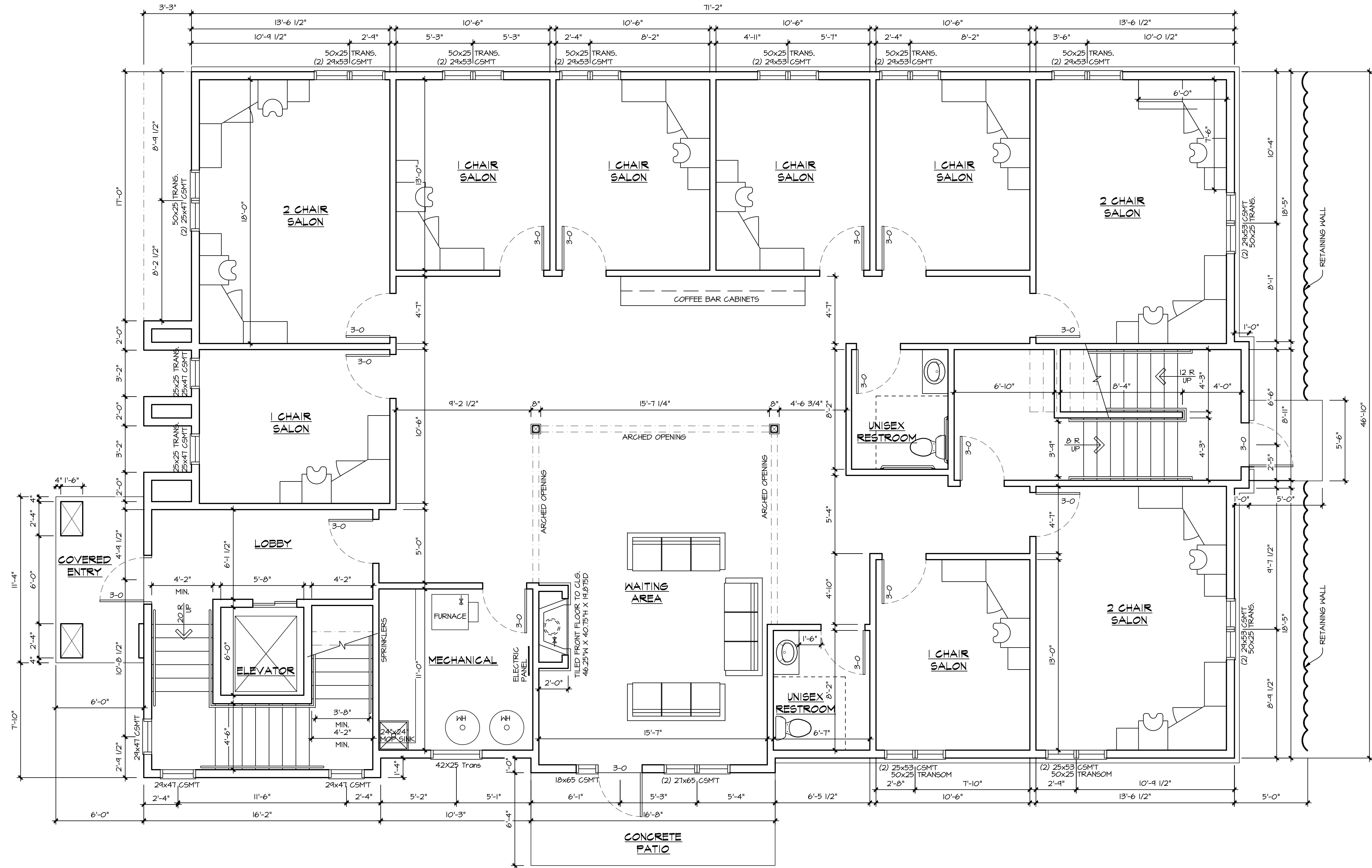
ROOF PLAN
 1/8" = 1'-0"



SIDE (SOUTH) ELEVATION
 1/4" = 1'-0"

A-5

COPYRIGHT: PATERA LLC... IT IS UNLAWFUL FOR ANYONE TO USE OR REPRODUCE BY ANY MEANS ALL OR ANY PORTION OF THESE CONSTRUCTION DOCUMENTS WITHOUT THE EXPRESSED WRITTEN PERMISSION OF PATERA LLC



MAIN FLOOR PLAN

1/4" = 1'-0"

3,487 SQ. FT.

1ST FLOOR 1-CHAIR SALON = 6
1ST FLOOR 2-CHAIR SALON = 3
TOTAL 1-CHAIR SALONS = 12
TOTAL 2-CHAIR SALONS = 6

MOORLAND ROAD SALON

MOORLAND ROAD
NEW BERLIN, WI 53151

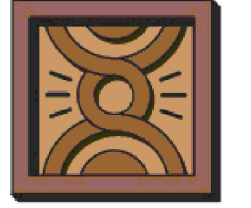
SHEET TITLE:
MAIN LEVEL FLOOR PLAN

A-2

DATE: APRIL 11, 2018

PROJECT NUMBER: 18-111

- REVISIONS:
- 5/24/18: PRELIM #1
 - 8/15/18: PRELIM #2
 - 9/6/18: PRELIM #3
 - 10/3/18: PRELIM #4
 - 10-11-18 revisions
 - 10-31-18 revisions
 - 11-16-18 revisions

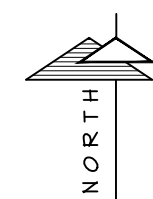
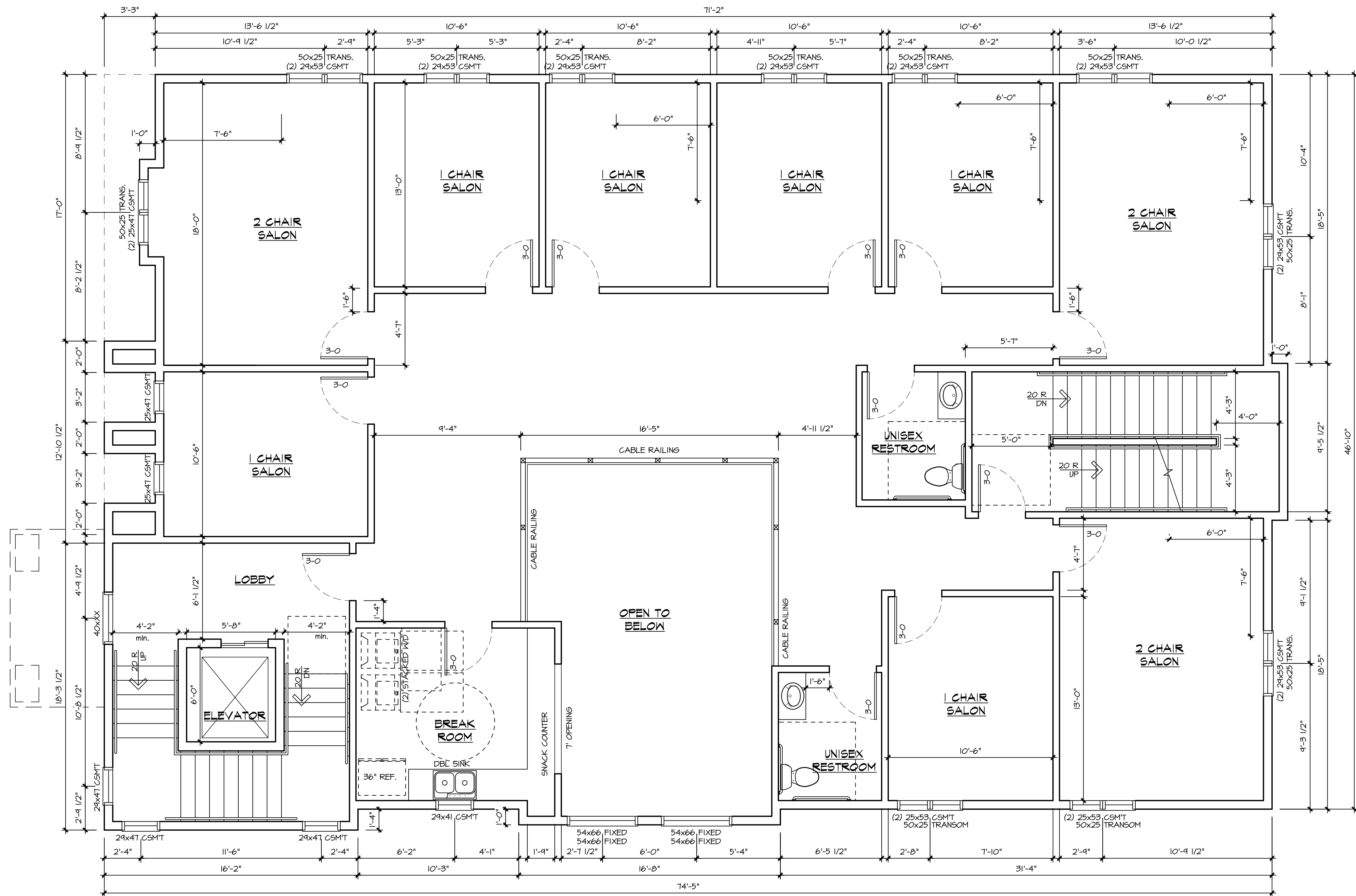


PATERA LLC

Excellence in Architecture

2601 S. Sunny Slope Rd. • New Berlin, WI 53151

Phone: 262-786-6776 Fax: 262-786-7036



SECOND FLOOR PLAN

1/4" = 1'-0"

2620 SQ. FT.

2ND FLOOR 1-CHAIR SALON = 6
2ND FLOOR 2-CHAIR SALON = 3

MOORLAND ROAD SALON

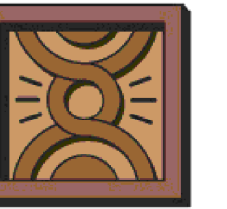
MOORLAND ROAD
NEW BERLIN, WI 53151

SHEET TITLE:
SECOND FLOOR PLAN

A-3

DATE: APRIL 11, 2018

PROJECT NUMBER: 18-111



PATERA

LLC
Excellence in Architecture

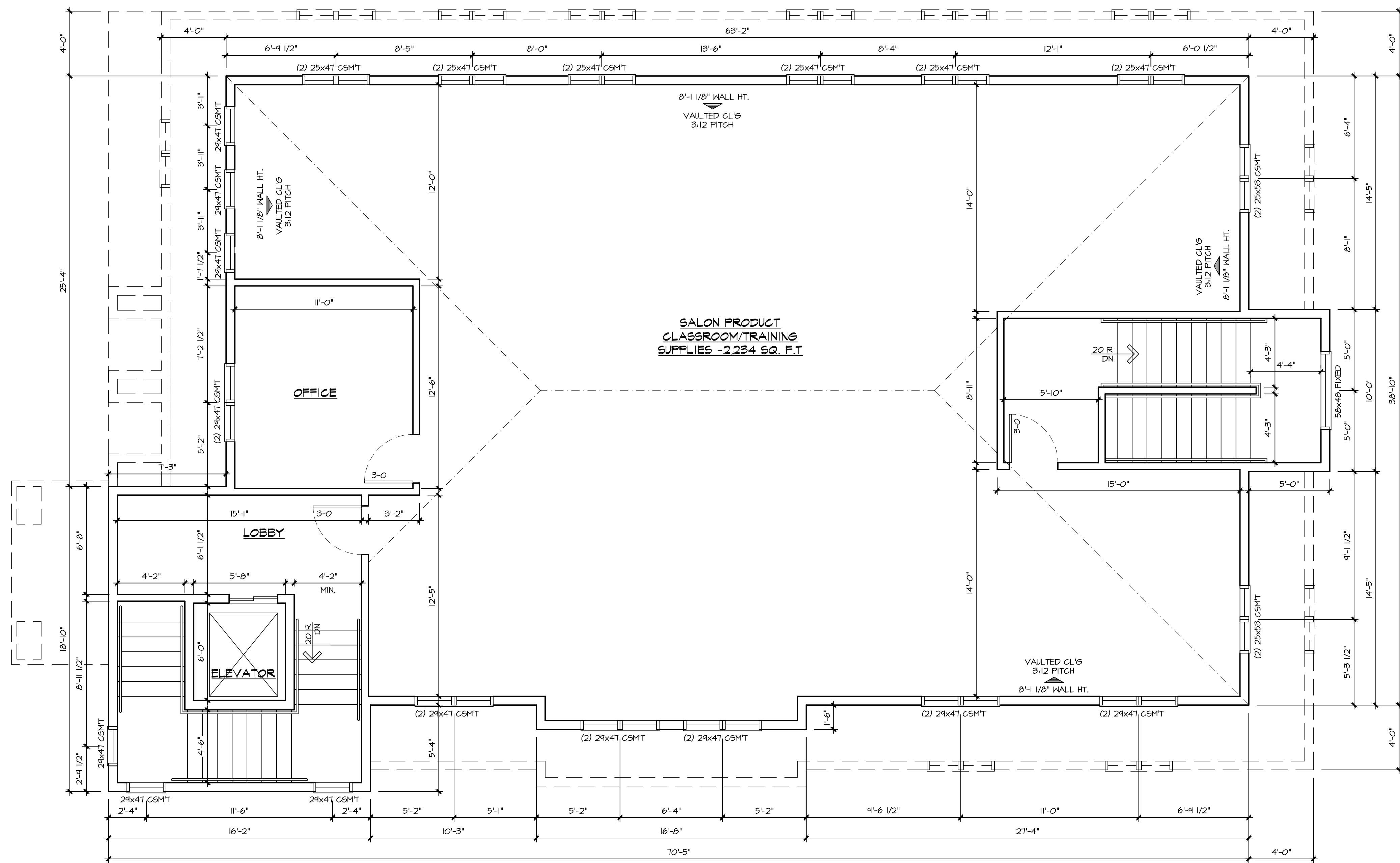
2601 S. Sunny Slope Rd. • New Berlin, WI 53151

Phone: 262-786-6776 Fax: 262-786-7036

REVISIONS:

- 5/24/18: PRELIM #1
- 8/15/18: PRELIM #2
- 9/6/18: PRELIM #3
- 10/3/18: PRELIM #4
- 10-11-18 revisions
- 10-31-18 revisions
- 11-16-18 revisions

COPYRIGHT: PATERA LLC...IT IS UNLAWFUL FOR ANYONE TO USE OR REPRODUCE BY ANY MEANS ALL OR ANY PORTION OF THESE CONSTRUCTION DOCUMENTS WITHOUT THE EXPRESSED WRITTEN PERMISSION OF PATERA LLC




THIRD FLOOR
 1/4" = 1'-0" 2,218 SQ. FT.

MOORLAND ROAD SALON
 MOORLAND ROAD
 NEW BERLIN, WI 53151
 SHEET TITLE:
THIRD FLOOR PLAN

A-4

DATE: APRIL 11, 2018
 PROJECT NUMBER: 18-111

- REVISIONS:
- 5/24/18: PRELIM #1
 - 8/15/18: PRELIM #2
 - 9/6/18: PRELIM #3
 - 10/3/18: PRELIM #4
 - 10-11-18 revisions
 - 10-31-18 revisions
 - 11-16-18 revisions

COPYRIGHT: PATERA LLC...IT IS UNLAWFUL FOR ANYONE TO USE OR REPRODUCE BY ANY MEANS ALL OR ANY PORTION OF THESE CONSTRUCTION DOCUMENTS WITHOUT THE EXPRESSED WRITTEN PERMISSION OF PATERA LLC